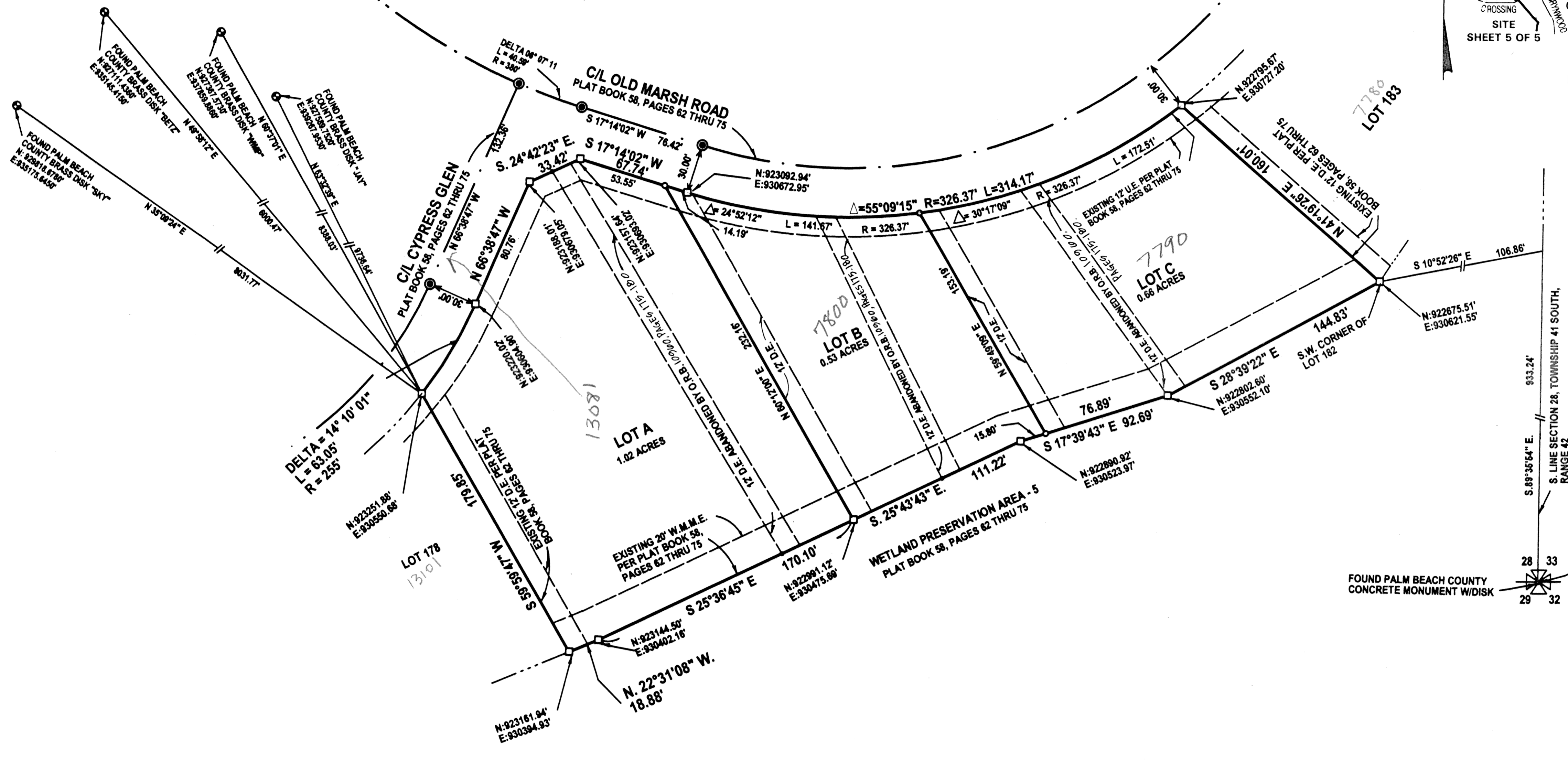
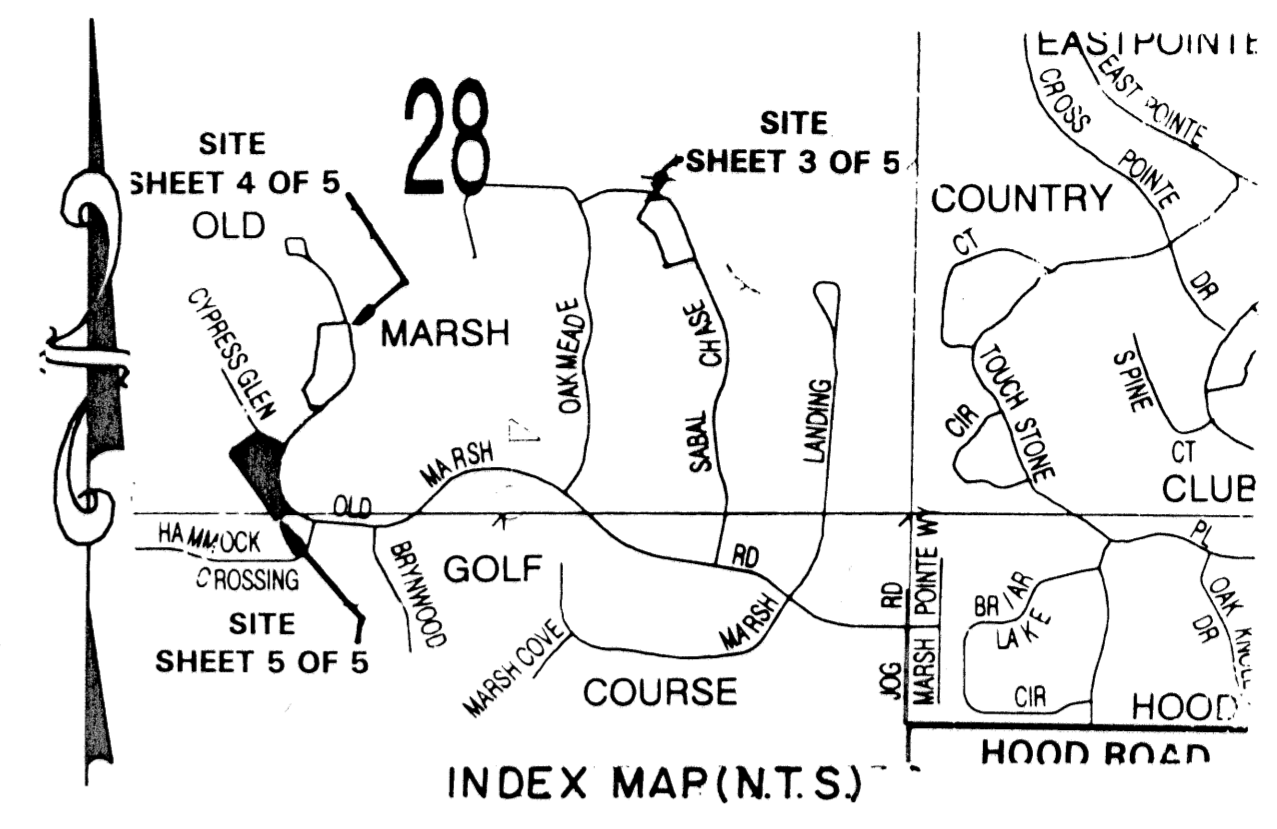
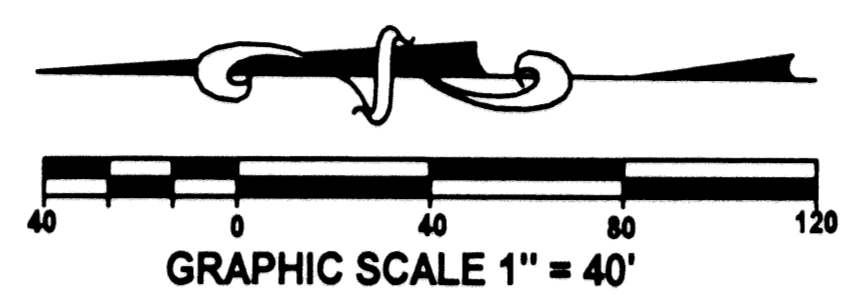


OLD MARSH GOLF CLUB MINOR REPLAT

BEING A REPLAT OF LOTS 115, 116, 117, 164, 165, 166, 167, 179, 180, 181 AND 182, PLAT OF OLD MARSH GOLF CLUB, A PLANNED UNIT DEVELOPMENT, PLAT BOOK 58, PAGES 62 THROUGH 75, LYING IN SECTION 28, TOWNSHIP 41 SOUTH, RANGE 42 EAST, PALM BEACH COUNTY, FLORIDA.
NOVEMBER, 1998. SHEET 5 OF 5

0474-004



State Plane Coordinate Information.
A. Coordinates shown are grid
B. Datum = NAD 83, 1990 Adjustment
C. Zone = Florida East
D. Linear unit = US Survey Foot
E. Coordinate system 1983 State Plane Transverse Mercator Projection
F. All distances are ground
G. Scale Factor = 1.0000304070
H. Ground distance x scale factor = grid distance

ABBREVIATIONS AND LEGEND

- C/L = CENTERLINE
- D.E. = DRAINAGE EASEMENT
- U.E. = UTILITY EASEMENT
- W.M.M.E. = WATER MANAGEMENT MAINTENANCE EASEMENT
- ⊙ = FOUND (P.C.P.) PERMANENT CONTROL POINT NO. 4165
- = SET (P.R.M.) PERMANENT REFERENCE MONUMENT NO. 2808, UNLESS OTHERWISE INDICATED.
- = MONUMENT AT LOT CORNER (SET 5/8" IRON ROD WITH CAP NO. L.B. 4165)
- Δ = DELTA
- R = RADIUS
- L = LENGTH OF ARC

NOTICE: There may be additional restrictions that are not recorded on this plat that may be found in the Public Records of this county.

This instrument was prepared by DONALD D. DANIELS, 725 North A-1-A, Suite C-111, Jupiter, Florida 33477

SUBDIVISION Old Marsh Golf Club
BOOK 85 PAGE 195
FLOOD ZONE 6 FLOOD MAP # 115B
QUAD # 42 ZONING REUSE
SE 85-42 ZIP CODE 33477
TALZ
PUD NAME Old Marsh Golf Club

 DONALD D. DANIELS, INC. Consulting Surveyors & Mappers	OLD MARSH GOLF CLUB MINOR REPLAT REPLAT OF LOTS 179, 180, 181 AND 182	
	Florida Certificate LB No. 4165 725 North A-1-A, Suite C-111 Jupiter, Florida 33477 TEL: (561) 747-9894	REF. 28/4142 OFFICE: DEB DATE: NOV, 1998.